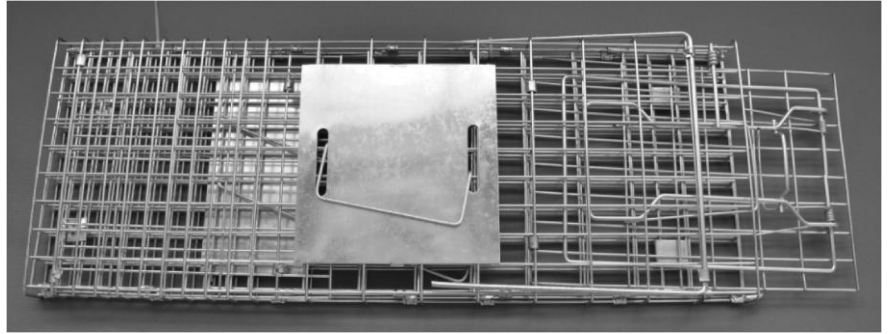


# OPERATION INSTRUCTIONS

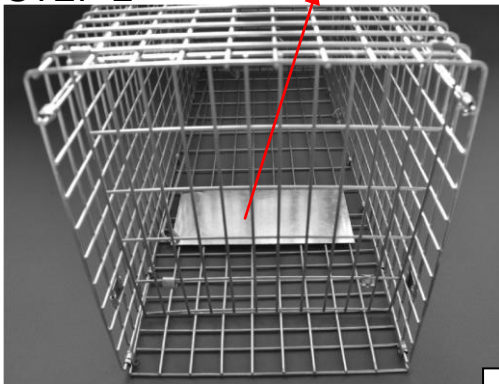
## STEP 1

Traps will arrive already flat(folded) packed,It will be tied together, Simply un-tie to release the trap.



## STEP 2

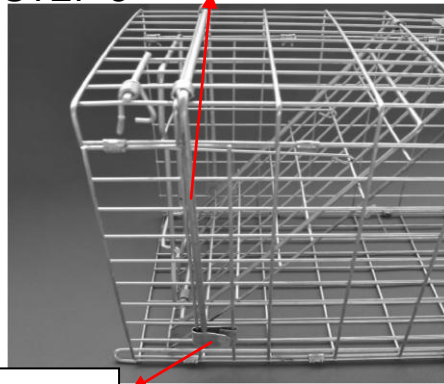
metal plate on the floor



Unfolding the trap ensure the metal plate on the floor, this is the plate which will trigger the trap door.

## STEP 3

"U" support arm

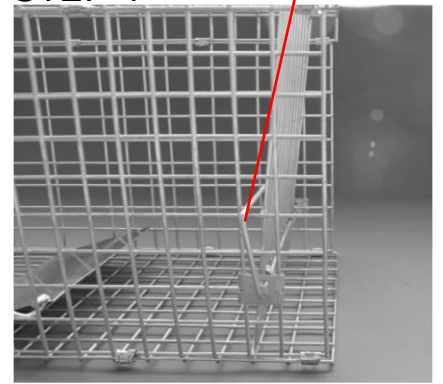


fixing clip

Pull down the "U" shaped support arms and fix them into the fixing clips located on the each side of the trap

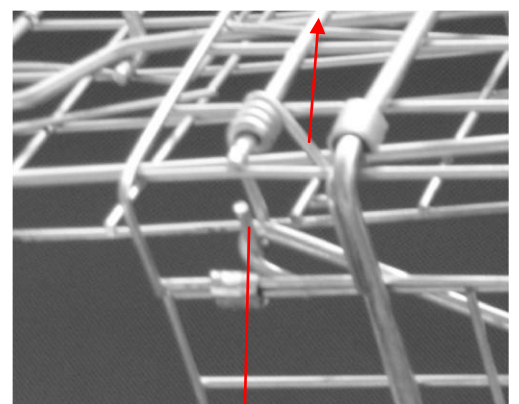
## STEP 4

rear door wire lock



Wire lock can be inserted through the designated holes to ensure the rear door doesn't open.

## STEP 5



U bend spring clip

The hook in the right through the metal plate inside the trap, **the left hook onto the spring clip as shown in the**

**RIGHT**

left hook

righthook

L shape metal hook

**picture.** The rod hooks onto the U bend spring clip whilst the L shape metal hook goes onto the door whilst in the cocked position.



When the trap is set correctly the rod will raise the metal plate about 5cm, Put some bait just past the plate so the pest goes past the plate. Then be trapped in the cage without harm. There are handles at the top of the cage so you can carry the pest without contact.

---

## SAVE THIS MANUAL

---

- 1. AVOID SHARP EDGES WHEN ASSEMBLING.**
- 2. KEEP PRODUCT USAGE ARE CLEAN.** Animal trap can be hosed off when cleaning.
- 3. CHECK FOR DAMAGED PARTS.** Before using this product, carefully check that it will operate properly can perform its intended function. Check for damaged parts and any other conditions that may affect its operation. Replace or repair damaged or worn parts immediately.
- 4. USE EXTREME CAUTION.** When transporting animal in trap. Be cautious of bites or scratching if you plan on carrying trap with animal inside.
- 5. DO NOT ALLOW CHILDREN TO STAND UPON OR CLIMB INTO ANIMAL TRAP.**
- 6. NEVER PUT TRAP ON A WOODEN DECK OR ANY OTHER SURFACE** that you do not want scratched.
- 7. PUT BAIT BETWEEN TRIGGER PAN AND BACK DOOR.** Bait should be far enough away from side so the bait cannot be reached from the outside. Don not put bait on Trigger Pan.
- 8. AFTER SETTING, CHECK THE TRAP AT LEASE ONCE PER DAY.** Caged animals suffer from stress andshould be treated humanely.

Please contact us for any further help.